



**SHAH INDUSTRIAL  
CORPORATION**

---

# ***COMPANY PROFILE***

---

# About SIC – Our Story

**Shah Industrial Corporation (SIC)** is a trusted pan-India partner delivering integrated bulk material handling, hydraulic, crushing, and flow control solutions for mission-critical industrial operations. For more than three decades, SIC has supported India's largest mining, steel, cement, and power plants with reliable products, engineered solutions, and dependable on-site services.

**Founded in Chhattisgarh by Shah Brothers** and now serving customers across India, SIC has built its reputation on engineering excellence, operational reliability, and long-term customer partnerships. SIC has primarily specialized in the supply of niche industrial products.

Today, the company is strategically broadening its capabilities by establishing a strong presence in the services domain, offering end-to-end solutions to its clients. Today, it has expanded its footprint across multiple states in India and is actively pioneering opportunities for further growth.

## Vision, Mission & Values

**Vision:** To be India's most trusted partner for mission-critical industrial solutions that enhance plant reliability, safety, and efficiency.

**Mission:** To deliver high-performance products and lifecycle support that reduce downtime and total cost of ownership.

**Values:** Reliability, Integrity, Customer Focus, Safety, Innovation, Long-Term Partnerships.

## Why SIC – Key Differentiators

- ➔ **30+ years** of deep technical & industry experience
- ➔ **Strong OEM network** - Elecon Group of Companies, FLSmidth, Emerson, KSB MIL, DRPM Indus Concare Pvt Ltd, Vautid Germany etc. and more
- ➔ On-site Installation under Supervision, Plant Audits - Troubleshooting & Refurbishment
- ➔ Proven capability in reducing downtime & improving plant performance
- ➔ Strong track record with India's largest industrial groups



# TRANSMISSION & MATERIAL HANDLING

## EQUIPMENT SOLUTIONS PACKAGE

Authorised Corporate Representative of **ELECON Group of Companies** which includes ELECON Gear, Elecon MHE, Prayas Engineering Limited, Elecon Peripherals, EMTICI Marketing, Elecon Hydraulics, and Radicon Power Build limited, for liaison work with their customers for the marketing of its products:

### i) **GEAR BOX AND GEARED MOTOR**



Bucket Wheel Gearbox



Planetary Gear Transmission



Vertical Rolling Mill Gearbox

### KEY CUSTOMER BENEFITS

**Maximise uptime with high-performance transmission systems**

Handle heavy-duty industrial loads **in demanding mining & material handling environments**

Extend equipment life **with OEM-certified gearbox solutions**

ii) **RAW MATERIAL HANDLING EQUIPMENT** and its spares such as Stacker Reclaimer, Scraper Reclaimer, Apron Feeder, Wagon Tippler, Wagon Loader, Truck Tippler, Truck Loader, Weigh Feeder, Belt Scales, Electro-Magnetic Separators, Metal Detectors, Rollers, Critical Pulley with Turbo-diaphragms, Electrical Hoists, Bucket Elevators, Bagging Machines and all types of conveyors solutions).



Stacker Reclaimer



Wagon Loader



Wagon Tippler

### KEY CUSTOMER BENEFITS

**One-Stop MHE Solution Provider**

**Proven Heavy-Duty Reliability**

**Reduced Lifecycle Cost**

# HYDRAULICS SOLUTIONS PACKAGE

SIC is a channel partner of ELECON Hydraulics a leading engineering and manufacturing company delivering complete hydraulic and pneumatic solutions across industries such as Mining, Steel, Cement, Ports, Power, Construction, Oil & Gas, Marine, Wind Energy, and Factory Automation. With 1800 m<sup>2</sup> of manufacturing space, advanced machinery, and strong engineering capabilities, Elecon Hydraulics provides world-class, reliable, and customised systems.

## PRODUCT RANGE:



HYDRAULIC MOTOR



HYDRAULIC PUMP



HYDRAULIC MOTOR WITH GEARBOX



HYDRAULIC MANIFOLD BLOCK WITH VALVES



HYDRAULIC VALVES



OIL/WATER COOLERS



HYDRAULIC POWER PACK



HYDRAULIC CYLINDER

Cylinder for Crusher Door Opening



Pitch Control of Wind Mill  
Bore: 140 mm , Stroke: 600 mm  
With LVDT & Control Manifold



Cylinder with Control Manifold block  
having load control valves for Boom  
Luffing of BWSR



Sluice Gate for Civil Engineering (Export) :  
Cylinder : Bore 220 mm, Stroke 4500 mm with Control Manifold block



## AMC SERVICES FOR HYDRAULICS PRODUCTS



AMC Service at Domestic Location



Installation, Commissioning and FAT

## KEY CUSTOMER BENEFITS

**Complete Solution Under One Roof:** Hydraulic Power Units, Cylinders, Manifolds, Valves, Pumps, Motors, Pneumatics, and Turnkey Systems—fully integrated and engineered in-house.

**Custom Designed Products:** Engineered-to-order cylinders, lubrication systems, HPUs, and manifolds tailored for heavy-duty applications.

**Advanced Engineering & Quality:** ISO-compliant designs, CNC machining, high-grade materials (MS, SG Iron, Aluminium, SS 304/316), and stringent testing ensure durability and safety.

**End-to-End Lifecycle Support:** AMC, retrofitting, refurbishing, repair services, installation, commissioning, and spares—offered across domestic & international locations.

**Proven Industrial Performance:** Reliable systems deployed in crushers, conveyors, wind turbines, mills, mining equipment, factories, sugar plants, and tunnel boring machines.

# COMPLETE DRIVE SOLUTION

SIC is a Channel Partner of **ROLCON ENGINEERING COMPANY LTD**, it is in technical & financial collaboration with KOBO-Donghua GmbH (Germany), makers of “KOBO”. SIC offers wide range of Rolcon Engineering’s core product line (under the brand **ROL-KOBO**) includes:

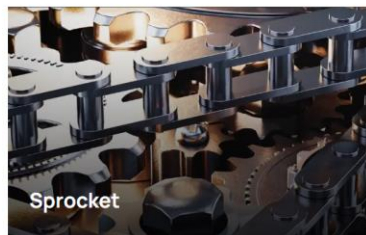
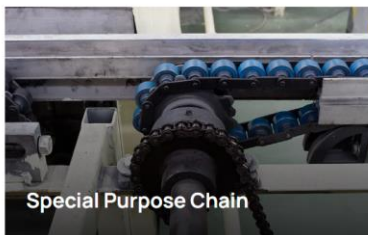
**i) Drive Chains** - Precision transmission chains for power transmission (ISO 606, DIN 8187, BS 228, ASME B29, API 7F, etc.);

**ii) Conveyor Chains:** Chains for conveyor systems, bucket elevators, scraper conveyors, etc.

**iii) Leaf Chains:** Heavy-duty chain for applications like forklift trucks, elevator doors, car-parking systems, etc.

**iv) Special-Purpose Chains:** Tailored chains for unique or demanding industrial applications

**v) Sprockets:** Standard sprockets, split-rim sprockets, segmental tooth rims. Sprocket-shaft assemblies (sprocket mounted on a shaft + bearing block + pedestal) for an integrated drive solution.



## Key Customer Benefits:

- 1. Reliability & Durability:** High breaking load, superior fatigue strength, and long wear life thanks to precision manufacturing and quality materials.
- 2. Global Standards, Local Execution:** Products built to international norms (ISO, DIN, BS, API), but manufactured locally in India—ensuring both high quality and cost efficiency
- 3. Customization & Engineering Expertise:** Technical sales and application engineering team helps clients choose the right chain/sprocket design per use case.
- 4. Lifecycle Support:** Maintenance manuals and alignment guidance help customers maximize service life.
- 5. Wide Industry Reach:** i) Suitable for very heavy-duty sectors (steel, mining) as well as more delicate conveyor/elevator systems — flexible application base; ii) Specialized chains (leaf, special purpose) make it possible to serve niche OEM needs.
- 6. Proven Stability & Legacy:** More than 50+ years in operation, with strong German technical collaboration (KOB) gives trust and proven track record.

# COMPLETE MINING SOLUTION

SIC is a Channel Partner of **FLSmidth India Private Limited**. FLS is a leading, full flowsheet minerals processing supplier to the global mining industry. Delivering proven technologies and services across the lifecycle of operations, and have set targets of providing solutions for **zero-emissions mining by 2030 with MissionZero programme**” SIC offers wide range of FLS products, complete primary crusher’s and it’s spares such as i) Gyratory Crusher’s, ii) Eccentric Roll Crusher’s, iii) Jaw Crusher EB, iv) Double Roll Sizer, and v) Double Roll Crusher to expand FLSmidth’s base in the mining units such as Hindustan Copper Limited, Hindustan Zinc Limited and National Mineral Development Corporation Limited (NMDC Ltd), and now Jindal Group of Companies (Raigarh and Tamnar).

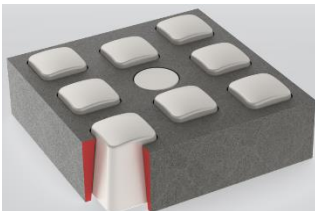


Gyratory Crusher



Eccentric Roll Crusher

## FERROCER 44: INTERLOCKING PANELS



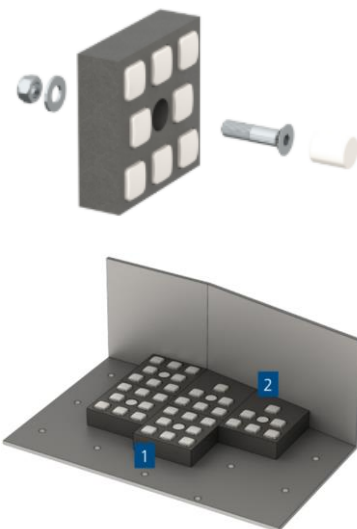
**FerroCer® Impact wear liner** is a composite wear liner which combines the superior abrasion resistance of a ceramic with the strength, toughness and malleability of a metal. This unique product was tested in all critical applications across the globe at high abrasive and impact areas and given unbelievable results.

### Installation

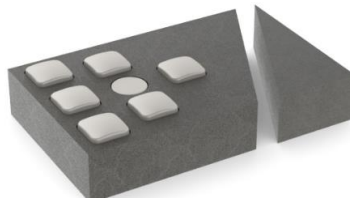
Their low weight and compact shape make FerroCer Impact panels quick and easy to install using standard hand tools. Each panel is attached using a single countersunk bolt. The mounting hole for the bolt is then closed using an adhesive coated ceramic plug.

### Sized for safety

FerroCer Impact panels are compliant with the manual handling requirements of occupational health & safety organisations. Their low weight and bulk often make them safer and easier to install than the large and heavy metal liners they replace.



1. FerroCer® Impact - Standard panel
2. FerroCer® Impact - Edge panel



In site tests, FerroCer Impact panels have achieved more than twice the wear life of the high hardness metallic liners they replaced. FerroCer Impact panels are lighter and less bulky than metallic liners making them safer, easier and faster to install.

**The best of both worlds**  
FerroCer® Impact is a composite wear liner which combines the superior abrasion resistance of a ceramic with the strength, toughness and malleability of a metal. It has been developed to handle hard and abrasive materials in high impact applications where traditional metallic liners wear too quickly and ceramic liners crack or disintegrate.

FerroCer Impact combines long wear life, ease of installation and affordable pricing to achieve a total cost of ownership which is less than half that of other liners. Its low replacement rate results in greatly reduced lost production time for mines.

## Construction

Each panel comprises a number of ceramic inserts enclosed within a matrix of cast metal. The matrix protects the more vulnerable side faces of the inserts and ensures that only the wear face of the ceramic is exposed to material impact.

Tapers on the sides of the inserts and corresponding holes within the matrix act to wedge the ceramic inserts within the matrix and prevent material particles and fluids from causing the inserts to be ejected from the matrix.

An adhesive applied to the inserts secures them within the matrix for transportation and installation.

## The Key benefits of the FerroCer

- Lowest Total Cost of Ownership on the market
- Increased wear life
- Safer, Easier & Faster installation
- Increases productivity
- Reduced maintenance time
- Reduced lost mine production time
- Simple installation
- Increased safety

	FerroCer® Impact Standard panel	FerroCer® Impact Edge panel
Dimensions	150 x 150 x 44 mm	225 x 150 x 44 mm
Weight per panel	5 kg	9 kg
Panels per m <sup>2</sup>	45	30
Percentage volume of Ceramic	54%	27%
Mounting method	1 x M16 bolt, nut, washer	1 x M16 bolt, nut, washer
Ceramic insert material	92 % Alumina	
Metal matrix material	Spheroidal Graphite	
Temperature limits	+300 °C -40 °C	+300 °C -40 °C

**Video Link:** [https://www.youtube.com/watch?v=i\\_VaE-C1NCQ](https://www.youtube.com/watch?v=i_VaE-C1NCQ)

# CONVEYOR SPILLAGE CONTROL SOLUTIONS

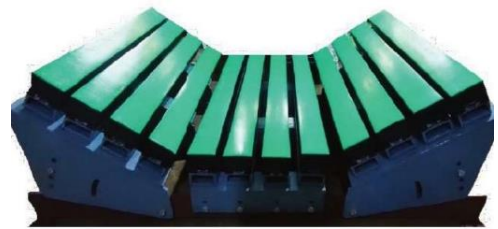
**SIC is a Channel Partner with DRPM Indus Concare Pvt Ltd.** for providing end-to-end solution of Conveyor Spillage Control Solution with the following **Key Customer Benefits:**

- ➔ SIC carry-out intense **Conveyor Audits** to find out the root cause of conveyor spillage, carry-out or belt sway
- ➔ Reduce belt damage and spillage, especially at high-impact loading zones
- ➔ Minimise unplanned downtime caused by misalignment, wear or material overflow
- ➔ Enhance worker safety by controlling dust, debris, and belt instability
- ➔ With upto 95% of scraper's cleaning efficiency, the target to achieve a clean environment

## INDUS IMPACT PAD

is a fusion of three different layers. The top layer is made of

**UHMWPE** for smooth gliding of the conveyor belt. The middle layer is of rubber to cushion the impact load, while the lower layer is for fastening impact pads on the support frame which is usually made up of Aluminium. INDUS's sophisticated manufacturing facility employs the latest fusion bonding techniques to produce the trio-composite Impact Pad with no possibility of separation.



### ADVANTAGES

- No Mechanical moving parts.
- Can withstand High Impact force upto 200 kgM.
- Top Surface Ultra-Smooth for reduced friction due to low co-efficient of friction of UHMWPE
- No direct screwing with frame and Low maintenance cost

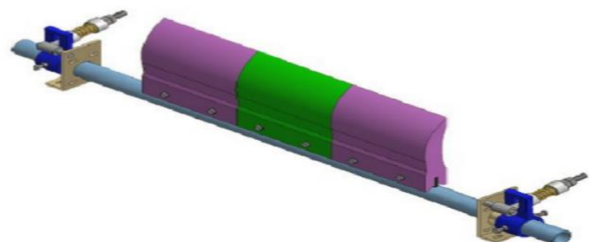
### Available Sizes:

Width -100 mm; Height – 55/70/75 mm; Length – As required

## PRIMARY SCRAPERS – P-SCRAP

Torsion Arm Pre Belt Cleaner

is having Polyurethane blades, in segments, mounted on a carrier assembly of steel tube. The steel tube is supported on both the sides with Spring Tensioner Arrangements / Elastomount, having special torsion spring of rubber to facilitate automatic blade adjustment against wear. It is suitable for mounting under Head Pulley of a conveyor to



remove heavy as well as small residual layer of carry back from the conveyor return belt.

#### ADVANTAGES

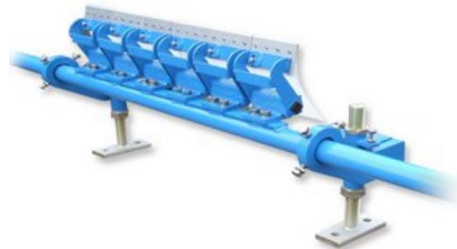
- Segmented type helps to change the portion of the blade wherever the wear out occurs.
- Both side SPRING TENSIONER helps to adjust the scraper with equal force from both ends.
- 3 O'clock installation helps to clean the belt efficiently what so ever the particle size is.

## SECONDARY SCRAPERS - Z-SCRAP The sprung Blade

INDUS Main/Secondary Belt Cleaner have Segmented metallic blades made of Special Tungsten Carbide Tip with SS base for abrasive / corrosive material handled. Each blade segment is mounted on special rubber spring actuated blade holder such that the blade is inclined at an angle against the direction of belt travel, with freedom for automatic individual blade deflection against belt undulation. The blade assembly to be mounted on carrier assembly made of steel and the whole assembly to be flexible supported on both ends with "Rubber Spring Tensioner / Elastomount" having special rubber springs, for automatic adjustment against blade wear.

#### ADVANTAGES

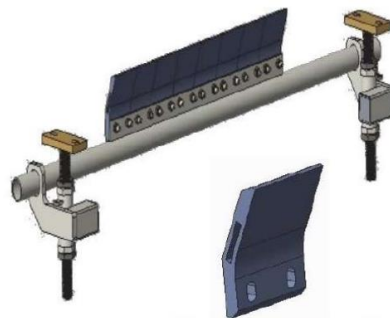
- Range of blades – Tungsten Carbide
- Suitable for all belt widths and speeds
- Extended belt life
- Low blade Pressure
- Blade Deflects (fasteners)
- Manual or Self adjusting
- Effective belt cleaning # low cost of ownership



## INDUS SUPER SCRAPERS - SERIES

#### Belt Friendly Special Purpose Scraper

- Can be used on belts with patches / holes / joints AND Compatible with belt fasteners.
- Temp range from 70°C to 250°C
- Made of engineered rubber, belt friendly
- Double Bush Fixing design - NO OSCILLATION
- Segmented multiple blades with interlocking arrangement provides precise cleaning
- Segmented blade are easy to replace.
- Both side TENSIONER keeps the scraper adjusted to the belt
- Offers lower cost of ownership, hence cost effective
- Available for all BELT WIDTH



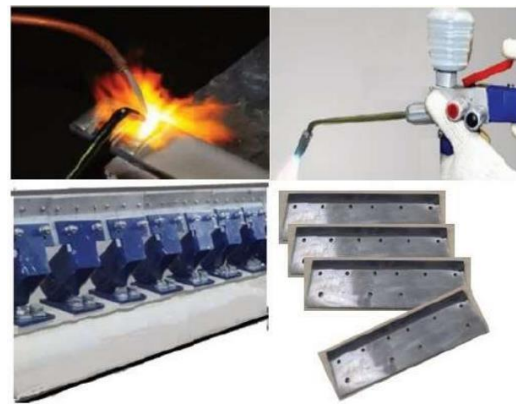
### Ultra High Temperature Range Scrapper

- The material used for PU blades is designed to bear 250° C temperature on continuous basis. It can bear spikes of upto 280° C
- Conshear blade design maintains cleaning efficiency while taking away the heat and ensuring long wear life matching Indus standards
- Comes in standard Indus design of segmented blades of width 360 mm ND 230 mm
- Segmented multiple blades with interlocking arrangement provides precise cleaning and are easy to replace
- Available for all BELT WIDTH



### Ultra High Abrasion Resistant Scrapper

- Specially designed hard faced SS blades having coating of high wear resistant TC alloy
- Very long life in comparison to their counterparts due to the high abrasive resistant TC alloy coating
- Can handle highly abrasive materials like iron ore, coke, slag, potash, Di-ammonium phosphate etc.
- Comes in Indus standard blade widths of 120 mm & 240 mm
- Big temperature range starting from 70 ° C going up to 250 ° C
- Available for all belt widths

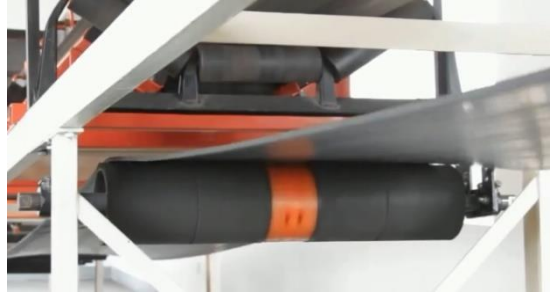


Belt Width (mm)	'C' (mm)	'D' (MM)	Shaft length (mm)
450	400	350	1950
600	550	500	2100
650	600	550	2150
700	650	600	2200
750	700	650	2250
800	750	700	2300
900	850	800	2400
1000	950	900	2500
1200	1100	1000	2700
1350	1250	1150	2850
1500	1400	1300	3000
1650	1550	1450	3150
1800	1700	1600	3300
2000	1900	1800	3500
2200	2100	2000	3700
2400	2300	2200	3900

# BELT TRACKERS – TRACK – N RETURN (R)

## FLAT TYPE RETURN ROLLER

- Central pivot completely sealed and manufactured of special steel for no seize.
- Central pivot inside the horizontal shaft and sealed for life ensures no dust and dirt jamming making the device maintenance free.
- Bearing type – Deep groove 6017 2RS sealed to with stand 49.9 KN at 5000 RPM.
- Designed to operate with belt speed 1m/sec to 7m/sec.
- No wing roller is required as tracking is done by the central roller only.
- Track-n rollers are rubber lagged for effective operation WITH Side by side movement **4-6 Degree**
- **ALL PARTS REPLACEABLE / REPAIRABLE**



# BELT TRACKERS – TRACK – N CARRYING (C)

## WING TYPE CARRYING ROLLER - TRACK-N (C)

- Central pivot completely sealed inside the central horizontal shaft and manufactured of special steel for no seize.
- Bearing type – Deep groove 6017 2RS sealed to with stand 49.9 KN at 5000 RPM.
- Wing rollers are in different axis with the central tracking roller and the belt will pass the wing roller before touching the central tracking roller.
- Most effective tracking as wing rollers are only to guide the belt.
- No 90° contact of wing roller with belt designed not to damage belt edges
- Designed to operate with belt speed 1m/sec to 7m/sec.
- Tracker rollers are rubber lagged for effective operation.



# INDUS SKIRT BOARD SEALING – SPILL CARE

Specially designed, Overlap, Segmented rubber blocks are absolutely suitable for spillage free loading zone.

## ADVANTAGES

- Segmented skirt blocks give better sealing at dusty loading zone.
- 'z' Type Special Overlap design holds the blocks under heavy pressure offalling material.
- Positive locking clamps keeps skirt board rubber securely in a place.
- Quick release action makes adjustments snaps.
- Accommodates any thickness of skirt materials. Eliminates needs of skirt board slotting.

# COMPLETE WEAR PROTECTION SOLUTIONS

**SIC is a Channel Partner with Vautid India Pvt. Ltd.** is a wholly owned subsidiary of VAUTID GmbH for providing end-to-end solution of Wear Protection Solution with the following comprehensive range of wear-protection products:

## Hardfacing / Welding Consumables

- Stick electrodes
- Flux-cored wires / tubular wires
- A variety of alloys tailored to different wear conditions (abrasion, impact, corrosion, high temperature, etc.)

**VAUTID ASW hardfacing welding consumables**

VAUTID hardfacing welding consumables can be used in a great variety of applications. They offer a solution to different problems protecting high-wear components in plant and machinery.



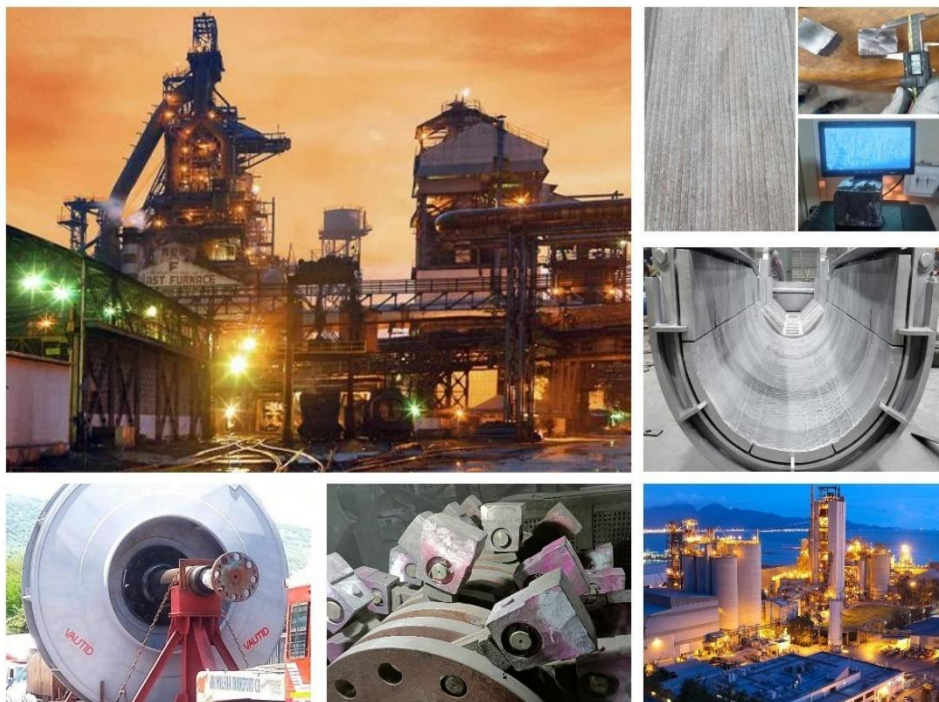
## Composite Wear Plates

- High-alloy wear plates with a layered structure
- Custom designs and ready-to-assemble units
- Can be cut, milled, tapped; suitable for welded or bolted installation



## Cast Products

- Components made in white cast iron or stainless steel
- Produced via various casting processes (sand, shell, lost-foam, etc.) [india.vautidgroup.com](http://india.vautidgroup.com)
  - Delivered ready-to-install, with optional machining



# Pneumatic Control Valves & Actuation Solutions

Since 2021, SIC has been an Authorised Channel Partner, managing project supply, technical support, commissioning, spares, and after-sales service for KSB MIL's complete range of pneumatic control valves and actuators.

**Pneumatic Control Valves:** Globe Type Control Valves, Single-Seated & Double-Seated Valves, Cage-Guided & Top-Guided Designs, High-Pressure & High-Temperature Valves, Low-Noise, Anti-Cavitation & Severe Service Valves

**Actuation Solutions:** Pneumatic Diaphragm Actuators, Smart Positioners & I/P Converters, Spring-Return & Double-Acting Actuators, Accessories: Air Filter Regulators, Solenoid Valves, Limit Switches

**Special Application Valves:** Control Valves for Steam, Boiler Feedwater & Turbine Bypass, Cryogenic Service Valves, High-Alloy & Special Trim Valves for corrosive media and Quick-Opening & Linear Control Valves

**Spares & Service Kits:** Trim Sets, Diaphragms, Seat Rings, Plugs, Stems, Positioner Spares, Gaskets, Seal Kits & Hardware

## i) Control Valves – General Service



**MIL 10000**

Top- and Bottom-guided double-ported control valve



**MIL 21000**

Top-guided single-ported heavy post-guided control valve



**MIL 27000**

Lightweight, rugged stem guiding, field-reversible act



**MIL 29000**

Compact microflow globe valves with high rangeability



**MIL 41000**

Cage-guided single-ported heavy-duty control valves

## ii) Control Valves – Severe Service



**MIL 70000**

Top-guided single-ported heavy-duty control valves in angle pattern.



**MIL 71000**

Cage-guided single-ported high-performance angle valve.



**MIL 76000**

The letdown control valves in angle pattern are designed for all applications where flashing (flash evaporation) or two-phase (liquid and gaseous) flows may occur



**MIL 77000**

Multi-stage low-noise control valve with labyrinth trim



**MIL 78000**

Multistage control valve in anti-cavitation design with wear-resistant multistage trim and detachable flow bush / spacer.



**MIL 91000**

Multistage multi-path control valve with Matrix trim; pressures of up to 420 bar can be reduced by up to 50 pressure reduction stages, preventing cavitation and greatly

iii) **Control Valves – Special Control Valves, customised according to application of the Customers.**



**MIL 90000**

The automatic recirculation valve (ARV) is a multifunctional valve whose primary function is to ensure a pre-determined minimum flow through the centrifugal pump at all times.



**MIL 81000**

Three-way combining and diverting control valves.

iv) **Rotary Valves – On-Off and Control**



**Actuators Includes:**



**MIL 37-38**

MIL 37 (fail-safe position: spring-to-close) and MIL 38 (fail-safe position: spring-to-open) are pneumatic single-spring diaphragm actuators for linear valves.

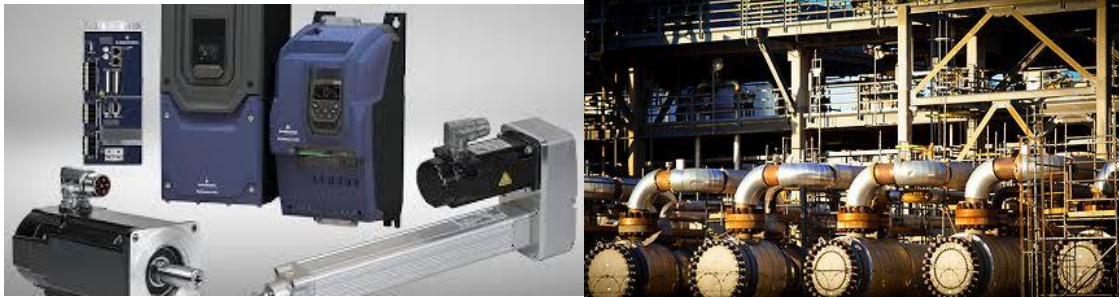


**MIL 67-68**

High-power high-performance double-acting piston actuator suitable for high supply air pressures (up to 100 psi; system air, natural gas or other non-corrosive gaseous fluids can be used).

# Instrumentation & Automation Solutions

SIC supplies a comprehensive range of Emerson Process Management instrumentation products widely used across all Industries. Emerson products are globally trusted for accuracy, reliability, safety, and digital intelligence.



Instrumentation and automation solution includes:

- 1. Pressure Measurement:** Rosemount Pressure Transmitters, Differential & Gauge Pressure, Multivariable Transmitters, Wireless Pressure Devices, and Manifolds & Diaphragm Seal Systems
- 2. Temperature Measurement:** Rosemount Temperature Transmitters, RTDs, Thermocouples & Thermowells. Surface/Inline Sensors, Wireless Temperature Solutions
- 3. Flow Measurement:** Micro Motion Coriolis Mass Flowmeters, Magnetic Flow Meters, Vortex Flow Meters, Ultrasonic Flow Meters, DP Flow Assemblies
- 4. Level Measurement:** Guided Wave Radar (GWR), Non-Contact Radar Level, DP Level Transmitters, Ultrasonic Level & Switches
- 5. Analytical Instruments:** pH / ORP / Conductivity / DO Analyzers, Gas & Liquid Analyzers Emission Monitoring (CEMS), Chlorine, Turbidity & Process Sensors
- 6. Wireless & Digital Solutions:** WirelessHART Pressure/Temperature/Flow, Gateways & Network Infrastructure, AMS Trex, Field Communicators & Diagnostics



**Pressure Measurement Solutions**



**Flow Measurement Solutions**



**Level Measurement Solutions**



**Temperature Measurement Solutions**



**Liquid Analysing Solutions**



**Gas Analysing Solutions**



## **EMERSON WIRELESS INDUSTRIAL TECHNOLOGY SOLUTIONS**

### **KEY CUSTOMER BENEFITS**

**High Accuracy & Reliability:** Emerson instruments deliver precise, repeatable measurements even in harsh plant conditions.

**Reduced Downtime through Smart Diagnostics:** Advanced health monitoring enables predictive maintenance and faster troubleshooting.

**Enhanced Plant Safety & Compliance:** SIL-rated devices, certified for hazardous areas, meeting global industry standards.

**Seamless Integration with Existing Systems:** Compatible with HART, Fieldbus, Modbus & WirelessHART protocols.

**Lower Operating Costs:** Better control → optimized processes → reduced losses → higher efficiency.

# LIST OF OUR VALUED CUSTOMERS



**NMDC LTD**  
BACHELI, KIRANDUL & DONIMALAI

एन एम डी सी स्टील



**NMDC STEEL LIMITED**  
NAGARNAR



**NTPC**  
SIPAT, LARA PROJECTS RAIGARH



**JINDAL STEEL AND POWER**  
RAIAGH, ANGUL, PUJIPATRA, DCPD



**JINDAL POWER LIMITED**  
TAMNAR



**CHHATTISGARH STATE POWER GENERATION COMPANY LIMITED**  
KORBA & BILASPUR



**HINDUSTAN COPPER LIMITED**  
MALANJKHAND PROJECT



**HINDUSTAN ZINC LIMITED**  
KHETRI PROJECT



**VEDANTA ALUMINIUM**  
JHARSUGUDA



**ULTRATECH CEMENT**  
RAWAN, HIRMI, BAIKHUNTH, KUKURDIH



**AMBUJA CEMENT LIMITED**  
BHATAPARA



**NUVOCO VISTAS**  
SONADIH